

Installation

1. Position the transmitter beside the door or window frame on the wall using either double sided tape (temporary) or screws (recommend). If you are using screws, first pry off the back plate with a small screwdriver and screw the back plate into position using the template. Then click the transmitter onto the back plate mounted on the wall.
2. Position the magnetic switch connected to the transmitter on the door/window frame.
3. Position the magnet on the door beside the magnetic switch. They should be no more than 1cm (3/8 inch) apart. When the door/window is opened, contact is broken and the transmitter sends a signal to activate the Skylink receiver(s) (Security Control Panel SC-001, Emergency Dialer AD-433S, Audio Alarm AA-433, Silent Alarm SW-433).



Program the Door/Window Sensor to the Security Control Panel (SC-001)

1. Enter the current MPIN (Master Personal Identification Number) on the SC-001.
2. Press [B].
3. Press the number key to identify which zone to add the Door/Window Sensor to.
Note: Zone 1 and zone 2 are intended for delay mode, the other zones are for instant alarm. Deciding on which zone you want to add the sensor depends on your application.
4. The zone light(s) will flash for eight seconds.
5. While the zone light(s) are flashing, press [*]. Now both the green and red lights flash for 30 seconds.
6. While the zone lights are flashing, activate the door/window sensor by pressing the button on the transmitter. The red LED light on the sensor will turn on. You will hear a long beep from the control panel, the zone light will stop flashing and the door/window sensor will now communicate to that zone.

Program the Door/Window Sensor to the Audio Alarm (AA-433)

1. With only the "ON" light lit on the Audio Alarm, press and hold the learn button located on the bottom of the Audio Alarm.
2. While pressing down on the learn button, activate the Door/Window Sensor by pressing the button on the transmitter. The red LED light on the sensor will flash.
3. If a connection has been made, the Audio Alarm will stop beeping and make a continuous tone until the black learn button on the Audio Alarm is released.
4. Now test the sensor by pressing the button on the door/window sensor again. If the Audio Alarm beeps, they are communicating.

Program the Door/Window Sensor to the Emergency Dialer (AD-433S, AD-1010)

1. Press [L], [5] when in clock mode, the display will show "L5 Id codE".
2. Activate the Door/Window Sensor within 5 seconds by pressing the button on the transmitter. The red LED light of the sensor will be on when the button on the sensor is pressed. The display will return to clock mode once the Door/Window Sensor has been learned.
3. If the contact between the magnetic switch and the magnet is broken (door/window is opened), it will trigger the Emergency Dialer and start dialing preset phone numbers (refer to AD-433S, AD-1010 User's Instruction for more details).

Operation

1. Each Door/Window Sensor contains 2 parts. One is the transmitter (with the test button), the other is the actual sensor.
2. Test the unit by pressing the test button on the transmitter. If the red LED light turns on, the unit is ready. Once the contact is broken, the transmitter will transmit a signal to Skylink's receiver(s).

Warranty

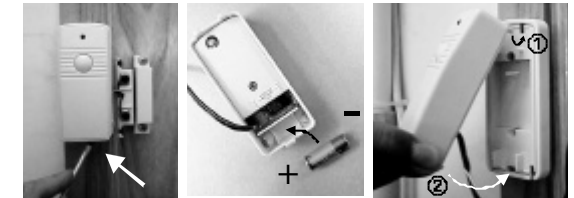
If, within one year from date of purchase, this product should become defective (except battery), due to faulty workmanship or materials, it will be repaired or replaced, without charge. Proof of purchase is required.

Battery

Each Door/Window Sensor operates on a 12 volt alkaline battery that is inside the transmitter. This sensor comes with the battery already installed.

To replace the battery:

1. Push on the clip at the bottom of the transmitter case with a sharp object (such as a paper clip or pen) and pull it away from the backplate.
2. Pry out the old battery from the end.
3. Push the new battery back into place. A diagram beside the battery well indicates which end is positive and which is negative.
4. Snap the transmitter back onto the backplate.



FCC

The Remote Control is approved by the FCC and it complies with Part 15 of the FCC Rules. Its operation is subject to the following two conditions :

1. This device may not cause harmful interference.

2. This device must accept any interference that may cause undesired operation.

WARNING:

Changes or modifications to this unit not expressly approved by the party responsible of compliance could void the user's authority to operate the equipment.

NOTE

If you would like to order Skylink's product or have difficulty getting them to work, please :

1. visit our website FAQ section at www.skylinkhome.com, or
2. email us at support@skylinkhome.com, or
3. call our toll free at 1-800-304-1187 from Monday to Friday, 9 am to 5 pm EST.
fax: 1-800-286-1320

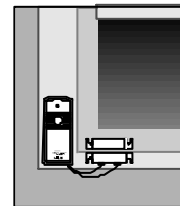
Skylink will not be held liable or responsible for any misuse or application of this product other than for its intended use.

CUSTOMER SERVICE

17 Sheard Avenue, Brampton, Ontario, Canada L6Y 1J3
Email: support@skylinkhome.com
<http://www.skylinkhome.com>
P/N. 101A096-004
US Patent 6243000B1
©2004 SKYLINK GROUP



DOOR/WINDOW SENSOR USER'S INSTRUCTIONS (Model WT-433)



® are registered trademarks of their respective corporations