

Skylink® Light Switch and Garage Door Receiver

Model SG-18R

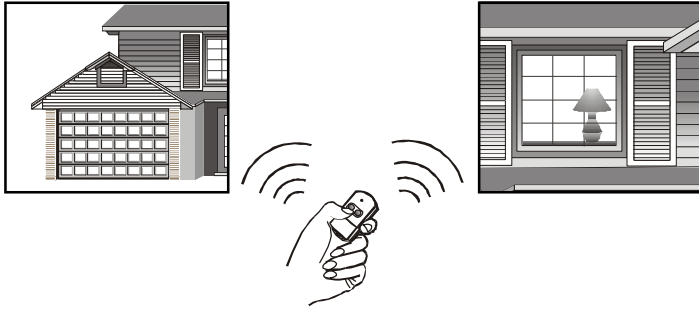
1. INTRODUCTION

In this package, you will find a garage door receiver and a red / black wire.



Model SG-18R can be used for 2 different applications:

- 1) Garage Door Receiver;
- 2) Lighting Control Receiver



A Skylink transmitter must be used to control this receiver. Compatible transmitters include Skylink keychain transmitter, Model 18TN, and Skylink 4-button keychain transmitter, 18T4. These multiple buttons transmitters can be used to operate both the garage door opener and lighting control. You can also control either the garage door opener or lighting control

The installation instructions below are divided into 2 parts:

- 1) Garage Door Receiver Installation
- 2) Lighting Control Installation

Follow the instructions below for the installation and operation of the SG-18R.

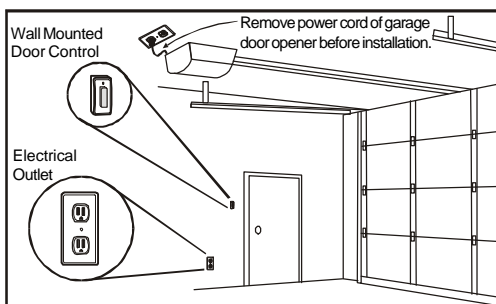
2. GARAGE DOOR RECEIVER INSTALLATION

The following instructions will show you how to install the receiver.

You need to locate 2 things inside your garage to install the receiver:

- 1) the wall-mounted door control;
- 2) an electrical outlet, select an electrical outlet different from the one already connected to the power cord of the garage door opener to reduce the chance of interference. The further distance between the receiver and the garage door opener, the less interference between 2 devices.

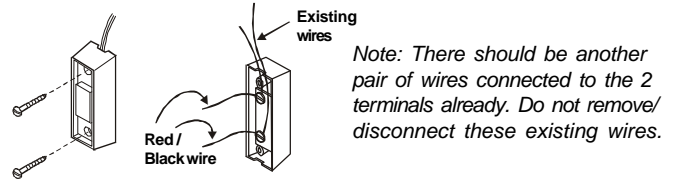
Note: The length of the red/black wire is 20ft, so the receiver must be plugged into an electrical outlet that is within 20ft of the wall mounted door control. If there is no electrical outlet within 20ft of the wall mounted door control, an extension cord can be used for temporary installation.



WARNING Unplug the power cord of your garage door opener before installation to ensure power is not connected.

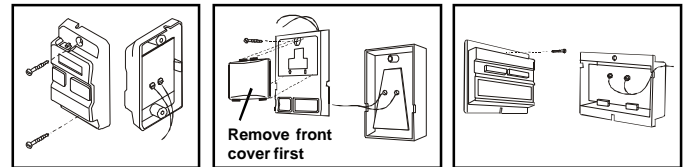
- 1 Remove the wall-mounted door control from the wall by removing the screws. Connect the stripped ends of the Red/Black wire to the 2 terminals (2 screws) on the back of the wall mounted door control. (Polarity does not matter.)

2. GARAGE DOOR RECEIVER INSTALLATION (CONT)



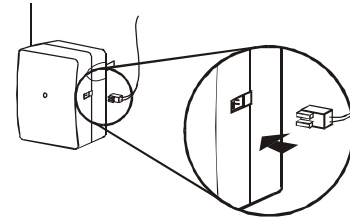
Note: There should be another pair of wires connected to the 2 terminals already. Do not remove/disconnect these existing wires.

Note: If you see no screws mounting the wall mounted door control, the screws are probably underneath the front cover. Remove the front cover by pressing onto the tabs on top of the cover.

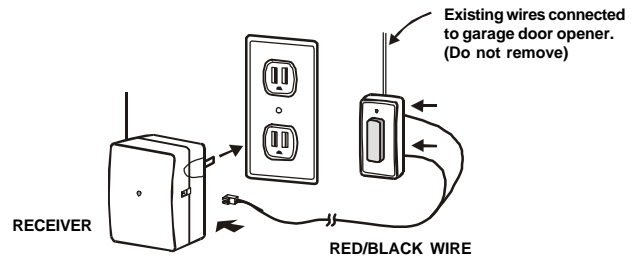


Different wall-mounted door controls

- 2 Plug in the connector end of the Red/Black wire to the SG-18R receiver. Note the orientation of the male & female connector.



- 3 Plug the receiver into an electrical outlet inside the garage. The red light on the receiver should be on after being plugged into an electrical outlet.



Note: Alternative wiring options are available, the receiver can be connected directly to the opener's motor. Please contact customer service for further information regarding alternative wiring options.

- 4 Re-connect the power cord of the Garage Door Opener.

3. LIGHTING CONTROL INSTALLATION

- 1 Plug the receiver into a powered, 120VAC electrical outlet inside your house. (Note: This receiver is designed to be used indoor only. Do not use this receiver in an outdoor environment.)
- 2 Once the receiver is plugged into an electrical outlet, the red LED on the front of the unit will be "on" indicating the unit is in standby mode.
- 3 Plug in the light fixture or small appliance that you would like to control into the receiver, as shown.

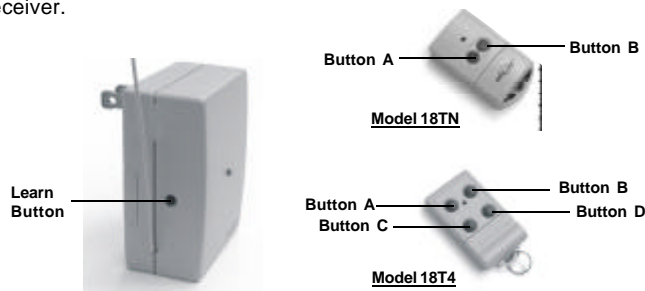


- 4 If there is a power switch on the plugged in light fixture or small appliance, please turn it on. The receiver is ready to be activated.



4. PROGRAM A TRANSMITTER TO THE RECEIVER

You need to do the programming in order to add a transmitter to the receiver.



- 1 Plug the receiver into an electrical socket.
- 2 Depending on what application you would like to control, the programming sequence is slightly different.

Program a transmitter to operate garage door opener:

Press the learn button once to program a transmitter to operate the garage door opener, the LED will flash slowly indicating the transmitter (button) you are about to program will control the garage door opener.

Program a transmitter to operate lighting control:

Press the learn button again (twice) to program a transmitter to operate the lighting control, the LED will flash rapidly indicating the transmitter (button) you are about to program will control the lighting.

- 3 Press the assigned button of transmitter 18TN (either button A or B) or transmitter 18T4 (either button A, B, C or D) you want to program to the receiver.
- 4 The receiver red LED will stop flashing indicating the programming is completed.
- 5 Repeat steps 1 to 4 to program addition transmitter (button).

5. REMOVE TRANSMITTER FROM THE RECEIVER

You can delete the transmitter from a receiver by following the instructions below:

- 1 Unplug the receiver from the electrical socket.
- 2 Press and hold the learn button on the left hand side of the receiver when plugging the receiver into an electrical socket, the red LED on the receiver will flash rapidly. All the transmitters and keypads are deleted.

6. ADDITIONAL TRANSMITTER

You can add up to 15 transmitters as you want to control the same receiver. Simply program the transmitters to the receiver. Skylink® offers Keychain Transmitter Model 18T4 and Keyless Entry Transmitter Model 18K to work with your receiver. For more information, please visit our website at www.skylinkhome.com or contact us.



7. TROUBLE SHOOTING

General

Q: The programmed transmitter (button) should operate the garage door, but now it turns on the light, or vice versa.

A: You have programmed the transmitter to the receiver incorrectly. Please erase the programmed transmitter(s) from the receiver, and then re-program the transmitter to the receiver again following the instructions on section 4. Pay attention to step 2 to select which application you want to program the transmitter into.

Q: Receiver does not react after pressing the button on the transmitter ?

A: - Ensure when the button on the transmitter is pressed, the red light on the transmitter comes on. Otherwise, check if the battery is inserted properly.
- The appropriate button on the transmitter should be pressed.
- Ensure the transmitter has been programmed to the receiver. Refer to section 4 for how to program a transmitter to the receiver.

7. TROUBLE SHOOTING (CONT)

Garage Door Opener

Q: Door opener does not react after pressing the button on the transmitter ?

A: - If the red light on the receiver flashes when you press the appropriate button on the transmitter, but the door opener does not respond, please ensure the red/black wire is successfully connected from the receiver to the wall mounted door control.
- Ensure the wires that are previously connected to the wall mounted door control are not loose.

Lighting

Q: After pressing the button on the transmitter, I hear a "click" sound from the receiver, but the plugged in lighting is not on.

A: Please ensure the power cord of the plugged in light is securely plugged into the receiver. Also, if the plugged in light has a on/off switch, that switch must be turned on.

8. CAUTION

RISK OF ELECTRICAL SHOCK. FOR INDOOR USE ONLY.
CAUTION : DISCONNECT POWER BEFORE SERVICING.

Maximum Rating:
Input : 120VAC 60Hz

AC socket for appliance control

RISK OF ELECTRICAL SHOCK. FOR INDOOR USE ONLY.
CAUTION : NOT FOR USE WITH DIMMER.
DISCONNECT POWER BEFORE SERVICING.

Maximum Rating :

Incandescent : 300 watts
Motor Load : 1/3 HP



9. FCC

This device complies with Part 15 of the FCC Rules. Operation is subject to the following two conditions: (1) This device may not cause harmful interference, and (2) This device must accept any interference received, including interference that may cause undesired operation.

WARNING:

Changes or modifications to this unit not expressly approved by the party responsible for compliance could void the user's authority to operate the equipment.

NOTE:

This equipment has been tested and found to comply with the limits for a Class B digital device, pursuant to Part 15 of the FCC Rules. These limits are designed to provide reasonable protection against harmful interference in a residential installation. This equipment generates, uses and can radiate radio frequency energy and, if not installed and used in accordance with the instructions, may cause harmful interference to radio communications.

However, there is no guarantee that interference will not occur in a particular installation. If this equipment does cause harmful interference to radio or television reception, which can be determined by turning the equipment off and on, the user is encouraged to try to correct the interference by one or more of the following measures:

- Reorient or relocate the receiving antenna.
- Increase the separation between the equipment and receiver.
- Connect the equipment into an outlet on a circuit different from that to which the receiver is connected.
- Consult the dealer or an experienced radio/TV technician for help.

10. WARRANTY

If, within one year from date of purchase, this product should become defective (except battery), due to faulty workmanship or materials, it will be repaired or replaced, without charge. Proof of purchase and a Return Authorization are required.

11. CUSTOMER SERVICE

If you would like to order Skylink's products or have difficulty getting them to work, please :

1. visit our FAQ website at www.skylinkhome.com, or
2. email us at support@skylinkhome.com (reply within 24 hrs), or
3. call our toll free at 1-800-304-1187 from Monday to Friday, 9 am to 5 pm EST.
Fax +800 286-1320

CUSTOMER SERVICE

17 Sheard Avenue, Brampton, Ontario, Canada L6Y 1J3
Email: support@skylinkhome.com
<http://www.skylinkhome.com>
P/N. 101A402
©2005 SKYLINK GROUP