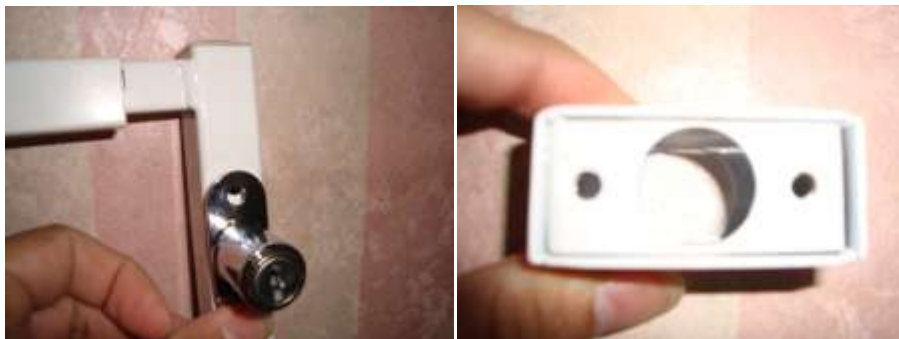


## Expandable Window Bars Lock Installation

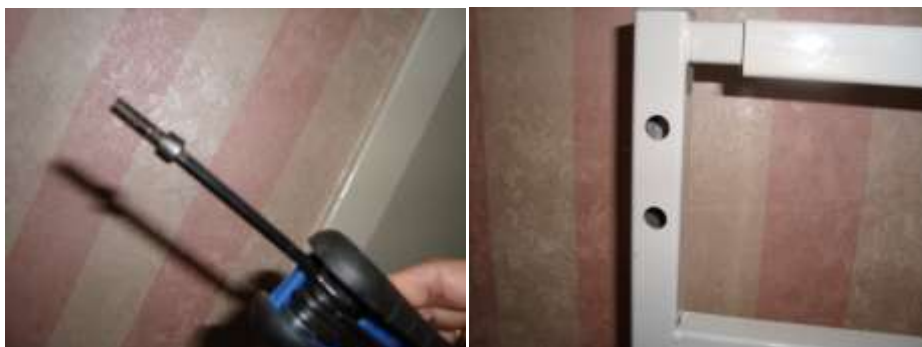
Step 1 : Locate three holes on window bars



Step 2 : Place Lock with White bracket (Without bolts) on face where three holes are.



Step 3 Take Bolt on Allen Key , Insert bolt from Back Side (Two Holes)



Step 4: Tighten the bolts with Lock



Step 5 Lock is in place now. Check Lock by inserting lock bracket (On Angle frame), Locking and un Locking

